

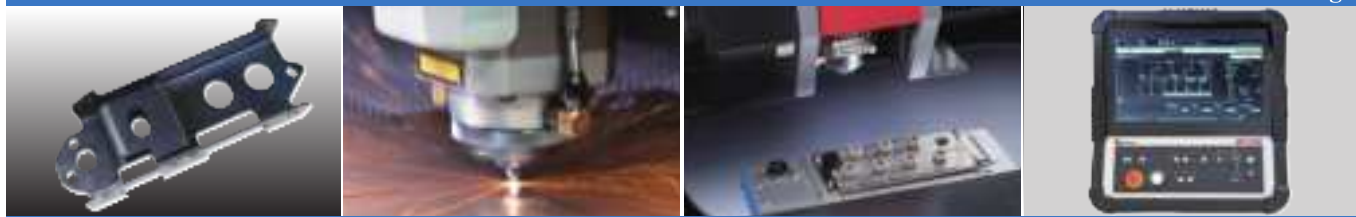
SOLUTION



High-efficiency
Fiber laser machine

LCG 3015 AJ II

Blanking



The Engineering AMADA

FL
FIBER LASER



The latest model of AMADA's global standard fiber laser High-efficiency fiber laser cutting system that most suit



LCG-3015AJII New technology

1 Better productivity

① Processing of various materials without changing the focus lens

- Reduce the operators' burden and cutting defects.

② Automatic nozzle changing unit

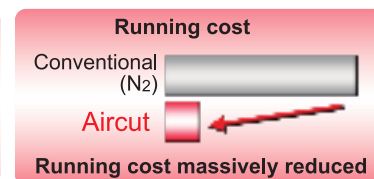
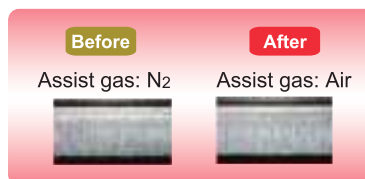
- Nozzle changing and alignment is automated.
- Machine setup minimal downtime.
- Various materials and thicknesses can be processed under automatic operation.
- Different materials and thicknesses can be processed within the same pallet.
- Flexible handling of rush orders.



2 Expanded processing range

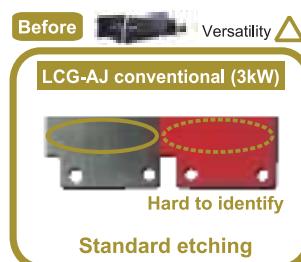
① High-pressure air cutting

- Process range expansion with High-pressurized assist gas.
- High-quality and reduced the running cost at the same time.
(Eliminates additional finishing process)



② Deep engraving

- High gap Z-axis sensor enables deep marking, allowing parts to be identified after powder coating.



er machine LCG-AJ series.

able for processing wide range of materials.



High-efficiency
Fiber laser machine

LCG 3015 AJ II

3 Flexible options

1 Upgraded automation solutions

Flexible configuration according to customers' factory layout.
Reduce lead time by automatic material loading/unloading.
Stabilized manufacturing cycle.

*TK described in this catalog refers to take out system



MPL-C



ASFH+TKL



AS-T



MARS

2 X-direction conveyor

The conveyor installed in the frame unloads scrap and small parts in the X-direction.

High-speed shuttle table

X-direction conveyor



4 Easy operation

AMNC 3i

AMNC 3i is a high-performance NC device that can be operated like a tablet.

- Easy sheet nesting edit after program calling
- Easy processing condition edit by touching figure on screen
- Operation result/ processing history display



AMNC 3i

■Dimensions

Unit: mm

■ LCG-3015AJII (L: 10136 x W: 2840 x H: 2274)



■Machine specifications

Model		LCG-3015AJII	
Registered model name		LCG3015AJII	
Oscillator		LD pumped fiber laser	
Rated laser power	W	3000	
NC model		AMNC-3i	
Axis travel method X, Y axes		Rack and pinion drive	
Axis control method		X, Y, Z axes (simultaneous controlled) + B axis+ CF axis	
Max. processing dimensions X x Y x Z	mm	3070 x 1550 x 100	
Rapid traverse X x Y composite	m/min	170	
Processing feed rate X x Y	m/min	0 ~ 120 (maximum command speed)	
Least input increment	mm	0.001	
Working surface height	mm	940	
Power requirement	Machine	kVA	4.0
	Oscillator	kVA	10.4
Mass of machine (include osillator)		kg	9100



For Your Safe Use

Be sure to read the operator's manual carefully before use.

- Use of this product requires hazard prevention measures to suit your work.

*Specifications, appearance and equipment are subject to change without notice by reason of improvement.

*The official model names of machines and units described in this catalog are non-hyphenated like LCG3015AJII.

Use these registered model names when you contact the authorities for applying for installation, exporting, or financing.

The hyphenated spellings like LCG-3015AJII are used in some portions of this catalog for sake of readability.

This also applies to other machines.

*The specifications described in this catalog are for the Japanese domestic market.



This laser product uses a Class 4 invisible laser for processing and a Class 3R visible laser for positioning.

- Class 4 invisible laser: Avoid eye or skin exposure to direct or scattered radiation. Never look into the radiation nor touch it.

- Class 3R visible laser: Avoid direct eye exposure.

© AMADA CO., LTD. All Rights Reserved.

AMADA CO., LTD.

www.amada.com

inquiry



AMADA head office is certified and registered of ISO14001.

E104-HQ01en

Jun. 2019